

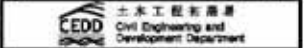
- LEGEND:**
- WATER QUALITY MONITORING STATIONS
- COOLING WATER INTAKES**
- WQ01 HONG KONG CONVENTION AND EXHIBITION CENTRE EXTENSION
 - WQ02 TELECOM HONG KONG ACADEMY FOR PERFORMING ARTS / SALT ON CENTRE
 - WQ03 HONG KONG CONVENTION AND EXHIBITION CENTRE PHASE 1
 - WQ04 WAN CHAI TOWER AND GREAT EXHIBITION CENTRE
 - WQ05 SUN HANG KAI CENTRE
 - WQ06 PROPOSED EXHIBITION STATION / WORLD TRADE CENTRE
 - WQ07 WINDZER HOUSE
 - WQ08 CITY GREEN
 - WQ09 PREVIENT CENTRE
 - WQ10 PROPOSED HERPA EXTENSION
 - WQ11 SUN HANG KAI CENTRE (REPROVISION)
 - WQ12 WINDZER HOUSE (TEMPORARY REPROVISION)
- MSD SALT WATER INTAKE**
- WQ21 WAN CHAI
 - WQ41 WAN CHAI (REPROVISION)
 - WQ51 GEMUNION ISLAND
 - WQ25 TAI BAA
 - WQ210 CHA KWO LING
 - WQ215 SAI WAN HO
 - WQ217 SCARRY BAY
 - WQ219 SHEUNG WAN
 - WQ220 KENNEDY TOWN

DESIGNATED PROJECTS (DP)

DP1	- CENTRAL WAN CHAI BYPASS (CNB) INCLUDING ITS ROAD TUNNEL AND SLIP ROADS
DP2	- ROAD P2 AND OTHER ROADS (PRIMARY / DISTRICT DISTRIBUTOR ROADS)
DP3	- PERMANENT AND TEMPORARY REDUPLICATION WORKS INCLUDING ASSOCIATED DREDGING WORKS IN WAN CHAI DEVELOPMENT PHASE 1 (WCH1) AREA
DP4	- TEMPORARY-EMERSON-SHELTER (DP4 NOT TO BE IMPLEMENTED)
DP5	- WAN CHAI EAST SEWAGE OUTFALL
DP6	- DREDGING FOR THE CROSS-HARBOUR WATER MAINS

DP1 IS COVERED BY EP - 314/2008
 DP2 IS COVERED BY EP - 316/2008
 DP3, DP5 AND DP6 ARE COVERED BY EP - 356/2005

WORKS CONTRACT	DESIGNATED PROJECT(S) INVOLVED	CONSTRUCTION COMMENCEMENT
CEDD CONTRACT NO. HK/2009/01	DP1, DP3, DP6	APRIL 2010
CEDD CONTRACT NO. HK/2009/02	DP1, DP3, DP6	APRIL 2010
CEDD CONTRACT 3	DP1, DP3	END 2011
CEDD CONTRACT 4	DP1, DP3	END 2012
CEDD CONTRACT 5	DP3	2015
HyO CONTRACT NO. HY/2009/11	DP3	18 MARCH 2010
HyO CONTRACT NO. HY/2009/15	DP1, DP3	SEPTEMBER 2010
HyO CONTRACT NO. HY/2009/16	DP1	OCTOBER 2010
HyO CONTRACT NO. HY/2009/18	DP1	NOVEMBER 2010
HyO CONTRACT 12	DP1, DP3	MID 2013



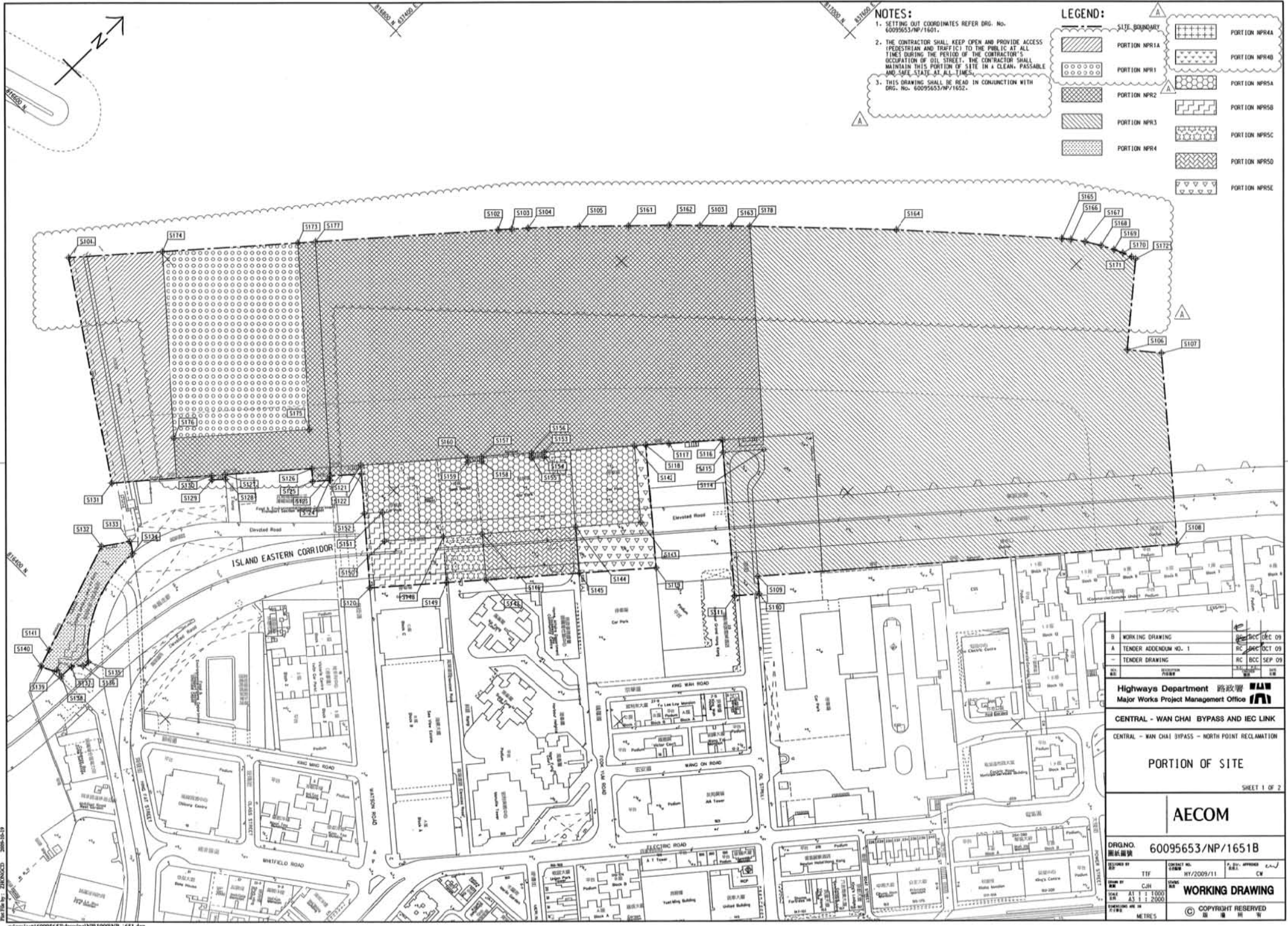
WAN CHAI DEVELOPMENT PHASE II
 WAN CHAI DEVELOPMENT PHASE II, P&I CENTRAL - WAN CHAI BYPASS - CANAL, P&I, C&S MEASUREMENT AND TESTING WORKS (STAGE 1)

LOCATIONS OF WATER QUALITY MONITORING STATIONS



PROJECT NUMBER	60041297/C5/SK001		
DATE	REVISED BY	DATE	SCALE
2011	ACC	2011	1:10000
DATE	BY	DATE	SCALE
2011	ACC	2011	1:10000
DATE	BY	DATE	SCALE
2011	ACC	2011	1:10000

© COPYRIGHT RESERVED



NOTES:

1. SETTING OUT COORDINATES REFER DRG. No. 60095653/NP/1601.
2. THE CONTRACTOR SHALL KEEP OPEN AND PROVIDE ACCESS (PEDESTRIAN AND TRAFFIC) TO THE PUBLIC AT ALL TIMES DURING THE PERIOD OF THE CONTRACTOR'S OCCUPATION OF DIL STREET. THE CONTRACTOR SHALL MAINTAIN THIS PORTION OF SITE IN A CLEAN, PASSABLE AND SAFE STATE AT ALL TIMES.
3. THIS DRAWING SHALL BE READ IN CONJUNCTION WITH DRG. No. 60095653/NP/1652.

LEGEND:

[Dotted pattern]	PORTION NPR1	[Cross-hatch pattern]	PORTION NPR4
[Diagonal lines /]	PORTION NPR2	[Diagonal lines \]	PORTION NPR5
[Diagonal lines /]	PORTION NPR3	[Diagonal lines \]	PORTION NPR6
[Diagonal lines /]	PORTION NPR4	[Diagonal lines \]	PORTION NPR5
[Diagonal lines /]	PORTION NPR1A	[Diagonal lines \]	PORTION NPR4A
[Diagonal lines /]	PORTION NPR1B	[Diagonal lines \]	PORTION NPR4B
[Diagonal lines /]	PORTION NPR1C	[Diagonal lines \]	PORTION NPR4C
[Diagonal lines /]	PORTION NPR1D	[Diagonal lines \]	PORTION NPR4D
[Diagonal lines /]	PORTION NPR1E	[Diagonal lines \]	PORTION NPR4E
[Diagonal lines /]	PORTION NPR1F	[Diagonal lines \]	PORTION NPR4F
[Diagonal lines /]	PORTION NPR1G	[Diagonal lines \]	PORTION NPR4G
[Diagonal lines /]	PORTION NPR1H	[Diagonal lines \]	PORTION NPR4H
[Diagonal lines /]	PORTION NPR1I	[Diagonal lines \]	PORTION NPR4I
[Diagonal lines /]	PORTION NPR1J	[Diagonal lines \]	PORTION NPR4J
[Diagonal lines /]	PORTION NPR1K	[Diagonal lines \]	PORTION NPR4K
[Diagonal lines /]	PORTION NPR1L	[Diagonal lines \]	PORTION NPR4L
[Diagonal lines /]	PORTION NPR1M	[Diagonal lines \]	PORTION NPR4M
[Diagonal lines /]	PORTION NPR1N	[Diagonal lines \]	PORTION NPR4N
[Diagonal lines /]	PORTION NPR1O	[Diagonal lines \]	PORTION NPR4O
[Diagonal lines /]	PORTION NPR1P	[Diagonal lines \]	PORTION NPR4P
[Diagonal lines /]	PORTION NPR1Q	[Diagonal lines \]	PORTION NPR4Q
[Diagonal lines /]	PORTION NPR1R	[Diagonal lines \]	PORTION NPR4R
[Diagonal lines /]	PORTION NPR1S	[Diagonal lines \]	PORTION NPR4S
[Diagonal lines /]	PORTION NPR1T	[Diagonal lines \]	PORTION NPR4T
[Diagonal lines /]	PORTION NPR1U	[Diagonal lines \]	PORTION NPR4U
[Diagonal lines /]	PORTION NPR1V	[Diagonal lines \]	PORTION NPR4V
[Diagonal lines /]	PORTION NPR1W	[Diagonal lines \]	PORTION NPR4W
[Diagonal lines /]	PORTION NPR1X	[Diagonal lines \]	PORTION NPR4X
[Diagonal lines /]	PORTION NPR1Y	[Diagonal lines \]	PORTION NPR4Y
[Diagonal lines /]	PORTION NPR1Z	[Diagonal lines \]	PORTION NPR4Z

B	WORKING DRAWING	09 DEC 09
A	TENDER ADDENDUM NO. 1	09 OCT 09
-	TENDER DRAWING	09 SEP 09

Highways Department 路政署
Major Works Project Management Office

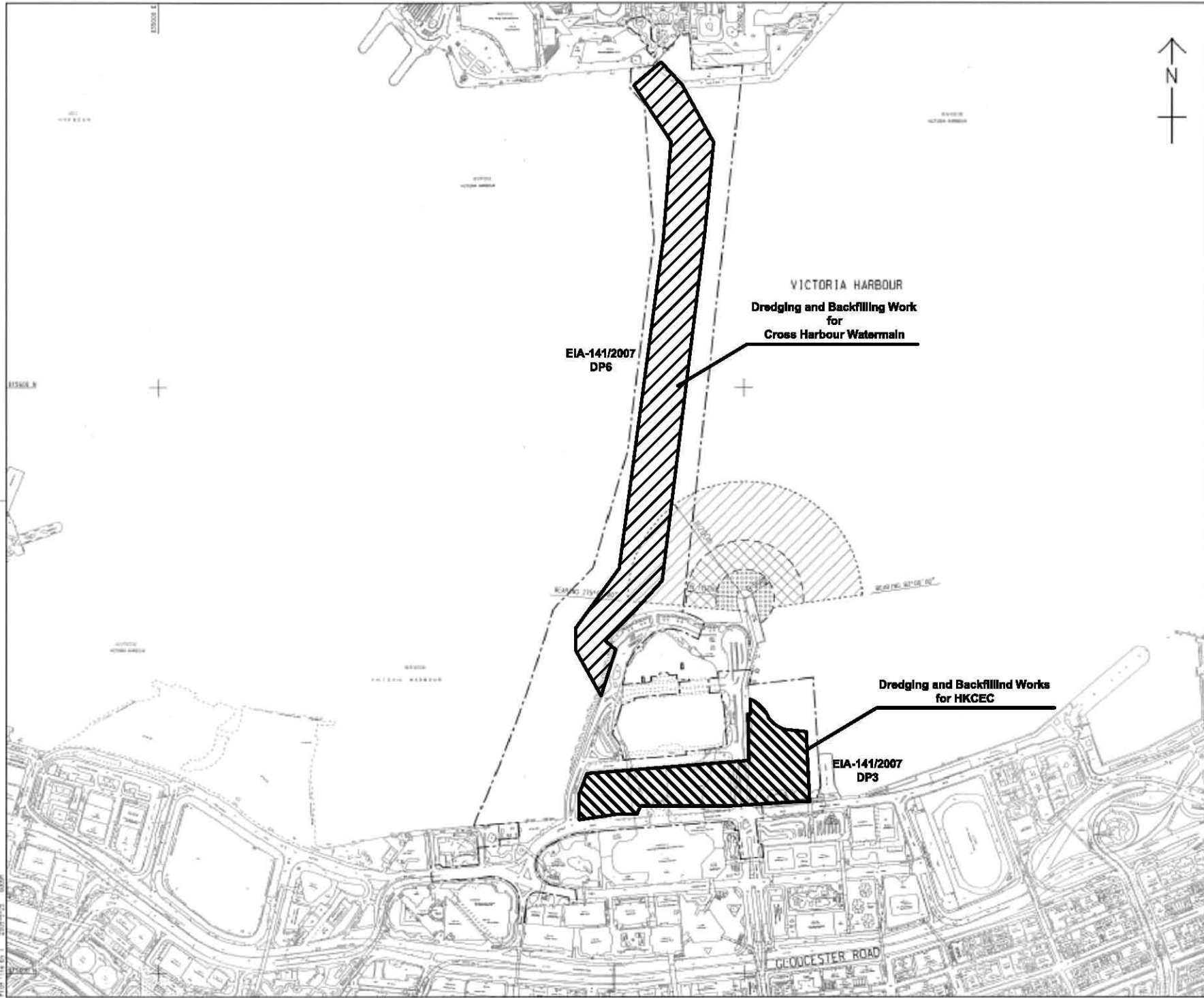
CENTRAL - WAN CHAI BYPASS AND IEC LINK
CENTRAL - WAN CHAI BYPASS - NORTH POINT RECLAMATION

PORTION OF SITE
SHEET 1 OF 2

AECOM

DRGNO.	60095653/NP/1651B
DESIGNED BY	TTF
CHECKED BY	CJH
DATE	11/2/2009
SCALE	AS SHOWN
UNIT	METRES

WORKING DRAWING
COPYRIGHT RESERVED



LOCATION PLAN
SCALE 1 : 5000

- NOTES:
1. ALL DIMENSIONS ARE IN METRES UNLESS OTHERWISE NOTED.
 2. THE RESTRICTION ZONE IS THIS DRAWING WILL COME INTO EFFECT AFTER THE OPERATION OF THE GOVERNMENT HULLING AT EDP/D/D/E LAST.

LEGEND:

- CONTRACT BOUNDARY
- [Diagonal Hatching] WORKING RESTRICTION ZONE
- [Cross Hatching] NAVIGATION AND WORKING RESTRICTION ZONE
- [Grid Hatching] WORKING BARGE, NAVIGATION AND WORKING RESTRICTION ZONE

TENDER ADDENDUM NO. 4	SEP 25, 2009
TENDER ADDENDUM NO. 1	SEP 25, 2009
TENDER DRAWING	SEP 25, 2009

CEDD 土木工程發展署
Civil Engineering and Development Department

WAN CHAI DEVELOPMENT PHASE II
WAN CHAI DEVELOPMENT PHASE II -
KONG KONG CONVENTION AND EXHIBITION CENTRE
**RESTRICTED ZONE FOR
CONSTRUCTION VESSELS**
(Contract no: HK/2009/01)

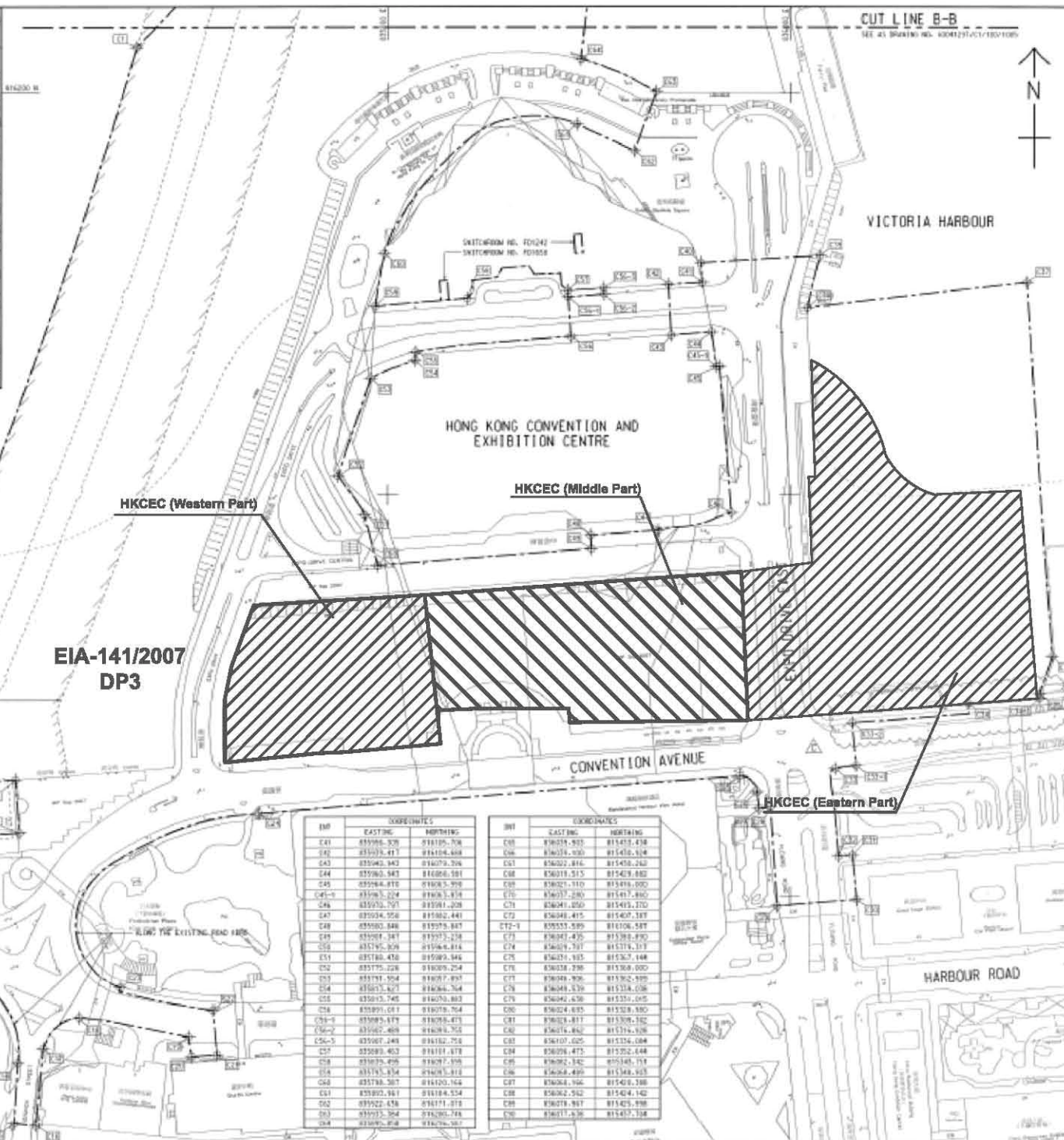
AECOM

DRGNO. 圖號	60041297/C1/100/1010B
DATE 日期	16/2009/01
SCALE 比例	AS 1:5000
COPYRIGHT RESERVED	



INSET 'A'
SCALE 1:1000

CENTRAL DISTRICT



EIA-141/2007
DP3

HKCEC (Western Part)

HKCEC (Middle Part)

HKCEC (Eastern Part)

INT	COORDINATES	
	EASTING	NORTHING
C41	835986.528	818105.708
C42	835979.417	818104.468
C43	835963.943	818079.706
C44	835963.543	818086.581
C45	835964.818	818085.528
C46	835965.504	818085.514
C46	835970.797	818081.208
C47	835974.956	818082.441
C48	835980.846	818079.887
C49	835981.347	818077.238
C50	835976.828	818066.814
C51	835984.478	818080.846
C52	835976.226	818089.224
C53	835974.504	818077.897
C54	835975.827	818084.764
C55	835973.745	818079.883
C56	835991.071	818078.764
C56-1	835990.679	818078.873
C56-2	835987.468	818078.765
C56-3	835987.248	818182.758
C57	835989.463	818181.878
C58	835978.498	818087.198
C59	835978.574	818085.818
C60	835978.507	818120.164
C61	835990.881	818184.524
C62	835922.434	818171.812
C63	835973.504	818080.788
C64	835970.818	818076.507

INT	COORDINATES	
	EASTING	NORTHING
C65	836028.933	818410.438
C66	836034.000	818410.614
C67	836022.816	818410.240
C68	836019.515	818403.882
C69	836021.110	818414.000
C70	836027.289	818411.880
C71	836041.050	818410.270
C72	836048.415	818407.187
C72-1	835555.589	818106.587
C73	836047.435	818385.890
C74	836049.797	818374.107
C75	836024.185	818382.148
C76	836038.298	818388.000
C77	836048.906	818382.888
C78	836048.439	818374.038
C79	836042.430	818351.015
C80	836024.635	818328.880
C81	836028.417	818308.182
C82	836024.882	818374.148
C83	836107.025	818324.084
C84	836098.473	818322.444
C85	836082.342	818340.714
C86	836084.499	818348.925
C87	836084.196	818340.388
C88	836082.512	818340.142
C89	836078.987	818345.898
C90	836077.430	818337.188

CUT LINE B-B
SEE AT DRAWING NO. 60041297/C1/100/1006



KEY PLAN
SCALE 1:10000

NOTE:
1. FOR NOTES & LEGEND, REFER TO DRAWING NO. 60041297/C1/100/1006.

INT	COORDINATES	
	EASTING	NORTHING
C1	836079.205	818222.559
C2	836079.207	818222.559
C3	836114.561	818224.825
C4	836117.020	818231.014
C5	836082.492	818229.522
C6	836081.584	818218.612
C7	836086.585	818215.197
C8	836086.199	818207.147
C9	836086.433	818202.247
C10	836081.082	818207.050
C11	836085.389	818208.075
C12	836077.496	818208.027
C13	836078.460	818204.817
C14	836086.433	818217.122
C15	836074.289	818208.593
C16	836078.195	818205.525
C17	836088.138	818204.441
C18	836046.085	818208.816
C19	836181.421	818250.587
C20	836202.537	818220.881
C21	836215.285	818271.484
C22	836213.182	818242.543
C23	836207.086	818209.074
C24	836226.984	818283.670
C25	836215.280	818280.251
C26	836201.647	818272.286
C27	836204.025	818243.836
C28	836206.218	818244.445
C29	836201.525	818230.180
C30	836203.781	818208.487
C31	836211.216	818228.470
C32	836204.142	818225.117
C33	836221.081	818264.482
C34	836226.290	818264.700
C35	836227.428	818264.286
C36	836208.187	818264.286
C37	836224.812	818268.093
C38	836224.747	818268.205
C39	836228.850	818219.134
C40	836218.190	818228.037
C41	836228.810	818237.295
C42	836218.906	818239.080
C43	836205.682	818215.512

C	TENDER ADDENDUM NO.4	SHEN JYL DEP C8
B	TENDER ADDENDUM NO.2	SHEN JYL DEP C8
A	TENDER ADDENDUM NO.1	SHEN JYL DEP C8
-	TENDER DRAWING	SHEN JYL DEP C8
20	2009	SEP 08

土木工程師學會
Civil Engineering and
Development Department

WAN CHAI DEVELOPMENT PHASE II

WAN CHAI DEVELOPMENT PHASE II -
CONTRACT NO. HK/2009/01
HONG KONG CONVENTION AND EXHIBITION CENTRE

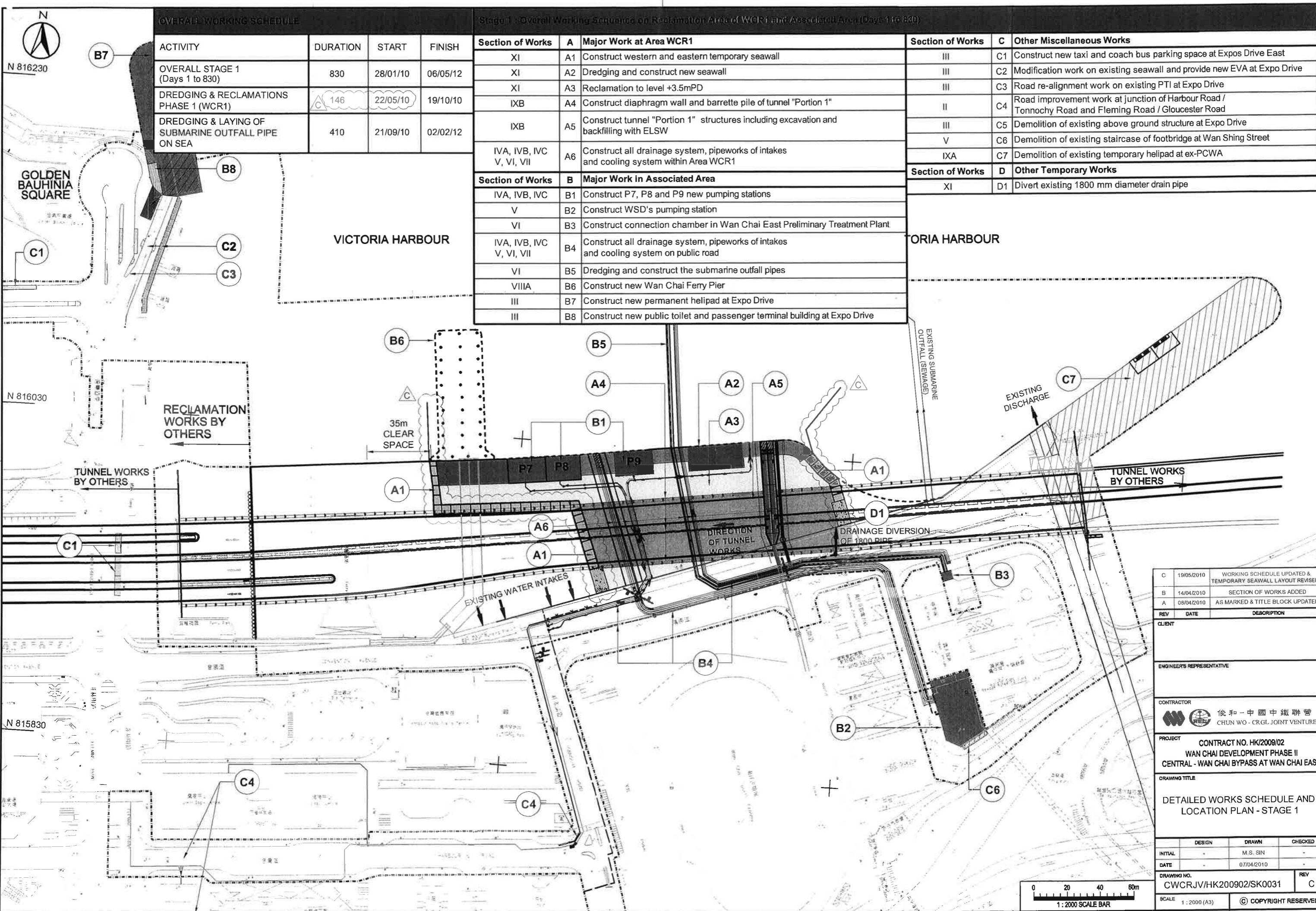
SITE BOUNDARY
SETTING OUT PLAN
(Contract no. Hk/2009/01)

AECOM

DRGNO.
圖號
60041297/C1/100/1006C

SCALE	1:1000	DATE	2009/01	BY	PM
DESIGNED BY	HSJ	CHECKED BY	HSJ	DATE	2009/01
DRAWN BY	HSJ	DATE	2009/01	BY	PM
SCALE	AS 1:2000	DATE	2009/01	BY	PM

© COPYRIGHT RESERVED



OVERALL WORKING SCHEDULE

ACTIVITY	DURATION	START	FINISH
OVERALL STAGE 1 (Days 1 to 830)	830	28/01/10	06/05/12
DREDGING & RECLAMATIONS PHASE 1 (WCR1)	146	22/05/10	19/10/10
DREDGING & LAYING OF SUBMARINE OUTFALL PIPE ON SEA	410	21/09/10	02/02/12

Stage 1: Overall Working Sequence on Reclamation Area of WCR1 and Associated Area (Days 1 to 830)

Section of Works	A	Major Work at Area WCR1	Section of Works	C	Other Miscellaneous Works
XI	A1	Construct western and eastern temporary seawall	III	C1	Construct new taxi and coach bus parking space at Expos Drive East
XI	A2	Dredging and construct new seawall	III	C2	Modification work on existing seawall and provide new EVA at Expo Drive
XI	A3	Reclamation to level +3.5mPD	III	C3	Road re-alignment work on existing PTI at Expo Drive
IXB	A4	Construct diaphragm wall and barrette pile of tunnel "Portion 1"	II	C4	Road improvement work at junction of Harbour Road / Tonnochy Road and Fleming Road / Gloucester Road
IXB	A5	Construct tunnel "Portion 1" structures including excavation and backfilling with ELSW	III	C5	Demolition of existing above ground structure at Expo Drive
IVA, IVB, IVC, V, VI, VII	A6	Construct all drainage system, pipeworks of intakes and cooling system within Area WCR1	V	C6	Demolition of existing staircase of footbridge at Wan Shing Street
			IXA	C7	Demolition of existing temporary heliport at ex-PCWA
Section of Works	B	Major Work in Associated Area	Section of Works	D	Other Temporary Works
IVA, IVB, IVC	B1	Construct P7, P8 and P9 new pumping stations	XI	D1	Divert existing 1800 mm diameter drain pipe
V	B2	Construct WSD's pumping station			
VI	B3	Construct connection chamber in Wan Chai East Preliminary Treatment Plant			
IVA, IVB, IVC, V, VI, VII	B4	Construct all drainage system, pipeworks of intakes and cooling system on public road			
VI	B5	Dredging and construct the submarine outfall pipes			
VIIIA	B6	Construct new Wan Chai Ferry Pier			
III	B7	Construct new permanent heliport at Expo Drive			
III	B8	Construct new public toilet and passenger terminal building at Expo Drive			

REV	DATE	DESCRIPTION
C	19/05/2010	WORKING SCHEDULE UPDATED & TEMPORARY SEAWALL LAYOUT REVISED
B	14/04/2010	SECTION OF WORKS ADDED
A	08/04/2010	AS MARKED & TITLE BLOCK UPDATED

CLIENT		
ENGINEER'S REPRESENTATIVE		
CONTRACTOR 俊和-中國中鐵聯營 CHUN WO - CRGL JOINT VENTURE		
PROJECT CONTRACT NO. HK/2009/02 WAN CHAI DEVELOPMENT PHASE II CENTRAL - WAN CHAI BYPASS AT WAN CHAI EAST		
DRAWING TITLE DETAILED WORKS SCHEDULE AND LOCATION PLAN - STAGE 1		
DESIGN	DRAWN	CHECKED
INITIAL	M.S. SIN	
DATE	07/04/2010	REV
DRAWING NO.	CWCRJV/HK200902/SK0031	REV
SCALE	1:2000 (A3)	C
© COPYRIGHT RESERVED		

